



PROVIDENCE PIPE PRODUCTS

PRODUCT SPECIFICATION SHEET

NAME: RIGID COUPLING - STEEL

DESCRIPTION/FEATURES:

- High Quality Galvanized steel
- Secure Connection
- Standard Threads

CODES & STANDARDS COMPLIANCE:

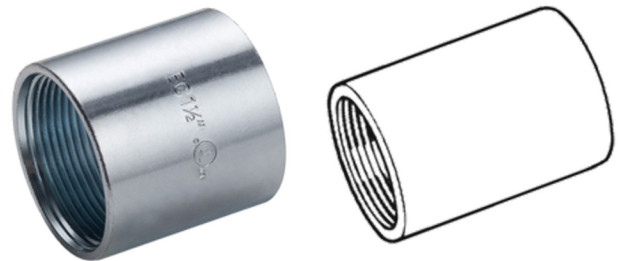
- UL 6
- ASME B1.20.1
- ANSI C80.3



APPLICATIONS:

- Used to securely connect rigid conduit, nipples, or elbows together in electrical installations, ensuring a robust and continuous pathway for wiring.

PRODUCT PHOTO/LINE DRAWINGS:



SPECIFICATIONS:

PROVIDENCE PART #	Trade Size	Weight Per 100 pcs		Outside Diameter "B"		Minimum Acceptable Length "A"		Standard Carton Qty	Weight Per Carton	
		KG	LBS	mm	in.	mm	in.		PCS	KG
P-GC50-STL	1/2"	6.35	14	25.7	1.012	41.3	1.626	150	9.5	21
P-GC75-STL	3/4"	9.07	20	31.8	1.252	41.7	1.642	50	4.5	10
P-GC100-STL	1"	14.06	31	38.7	1.524	50	1.969	30	4.2	9
P-GC125-STL	1-1/4"	17.69	39	47.5	1.870	51.6	2.031	25	4.4	10
P-GC150-STL	1-1/2"	25.4	56	54.7	2.154	52.4	2.063	25	6.4	14
P-GC200-STL	2"	33.11	73	67.3	2.650	54	2.126	20	6.6	15
P-GC250-STL	2-1/2"	83.92	185	82.6	3.252	81	3.189	12	10.1	22
P-GC300-STL	3"	102.51	226	98.3	3.870	84.1	3.311	8	8.2	18
P-GC350-STL	3-1/2"	162.39	358	114.3	4.500	86.5	3.406	4	6.5	14
P-GC400-STL	4"	181.44	400	123.8	4.874	89.3	3.516	4	7.3	16
P-GC500-STL	5"	225.44	497	152.4	6.000	100.4	3.953	2	4.5	10
P-GC600-STL	6"	370.1	816	182.9	7.201	108	4.252	3	11.1	24